



TATA CONSULTANCY SERVICES

**Certificate Import to Aladdin
eToken**

CONTACT

TATA CONSULTANCY SERVICES - [CERTIFYING AUTHORITY: PKI SERVICES]

ADVANCED TECHNOLOGY CENTRE, **deccan**park, 1 - SOFTWARE UNITS LAYOUT

MADHAPUR, HYDERABAD - 500 081

TEL: +91 (40) 66673524 / 3525 / 3536

FAX: +91 (40) 66672222

TOLL FREE: 1-800-425-2922

www.tcs-ca.tcs.co.in

1. ABOUT THE DOCUMENT

This document describes the procedure for importing Digital Signature Certificate from browser to Aladdin eToken

GETTING STARTED

To start the process, procure the Digital Signature Certificate Enrollment Kit from TCS-CA or its Registration Authorities. The kit contains:

- USB Token (Aladdin eToken)
- Installation CD. This contains:
 - USB Drivers
 - Mozilla Firefox
 - TCS File Signer Plus Evaluation Copy

Note:

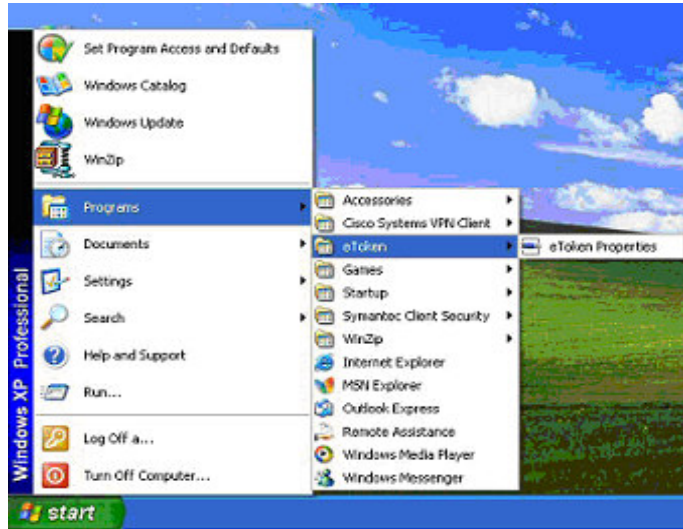
- *Use the Installation CD to install the USB Token driver.*
- *Ensure the following before installing the USB token driver.*

	<ul style="list-style-type: none">✓ System Requirement:<ul style="list-style-type: none">○ Operating System: Windows 2000, XP○ Browser: Internet Explorer 5.5 and above✓ You should have the Administrator privileges for installing the USB Token Driver.
--	--

USING ALADDIN ETOKEN

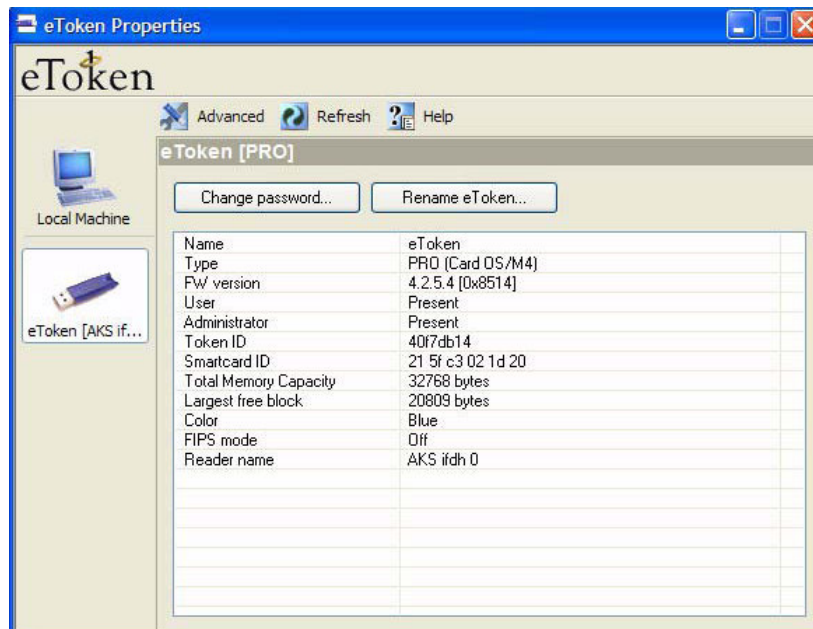
To install the eToken:

1. Insert the CD into the CD drive of your computer.
2. To install eToken driver click on **etoken_driver_aladin.msi** Windows Installer Package. Accept the License Agreement and proceed with installation.
3. Insert the iKey USB Token in the USB port of the computer, if prompted
4. Restart the computer after the installation is complete.
You can now see the eToken Properties from the Start Menu by selecting Programs>eToken.



Note: The default password for Aladdin eToken is "1234567890". Please change the password the first time you use the token since login with the default password is not allowed.

Click "eToken Properties" and with your eToken inserted, the following screen is displayed:



Changing the eToken Password:

All eTokens are configured at manufacture with the factory default password. This password is "1234567890". Click "Change password" on the eToken Properties screen and the following eToken Properties dialog is displayed:



The screenshot shows the "eToken Properties" dialog box. At the top, it says "eToken" with a logo. Below that, there are three text input fields: "Current Password:", "New Password:", and "Confirm Password:". To the right of these fields is a "Password quality" gauge showing "00.0%". Below the gauge, there is a text box with the following text: "A good password is at least 8 characters long and a combination of various lower case and upper case characters, numbers, and punctuation marks." At the bottom of the dialog, there are three buttons: "Show Tips >>", "OK", and "Cancel".

Enter your current eToken password in the "Current Password" field and, the new password in the "New Password" field. Confirm new Password and click "OK" to set the new Password.

Renaming the eToken:

For additional convenience and ease of identification, the eToken name can also be personalized. Click "Rename eToken" on the eToken Properties screen. Since renaming the eToken requires the eToken password, the following dialog is displayed:

Give the Password for the eToken and click "OK"

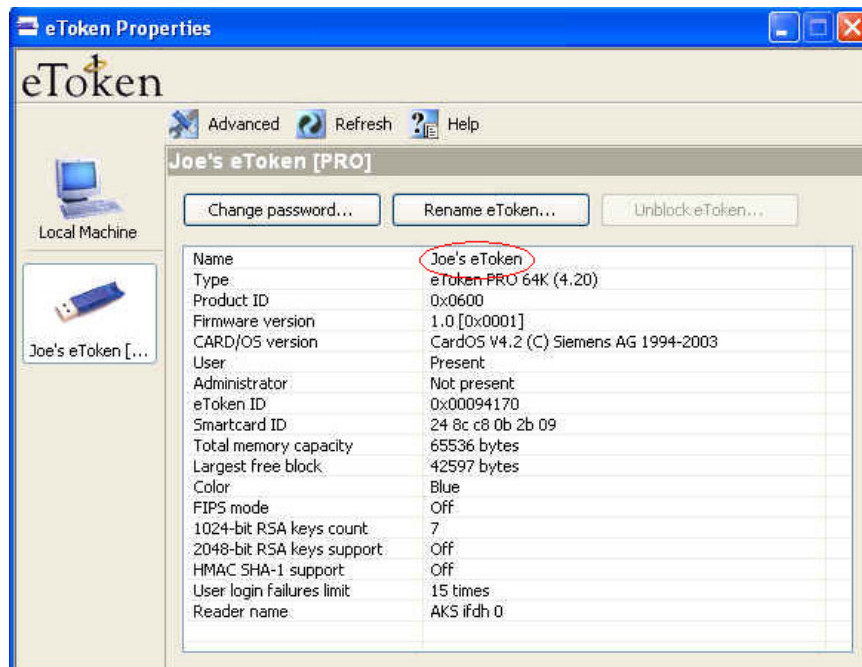


The screenshot shows the "eToken Properties" dialog box. At the top, it says "eToken" with a logo. Below that, there is a text box with the text "Enter eToken password". Below this, there are two input fields: "eToken:" with a dropdown menu showing "eToken [AKS ifdh 0]" and "Password:" with a text input field. At the bottom of the dialog, there are two buttons: "OK" and "Cancel".

Enter the new eToken name in the eToken Name field and click "OK" to set the eToken Name.

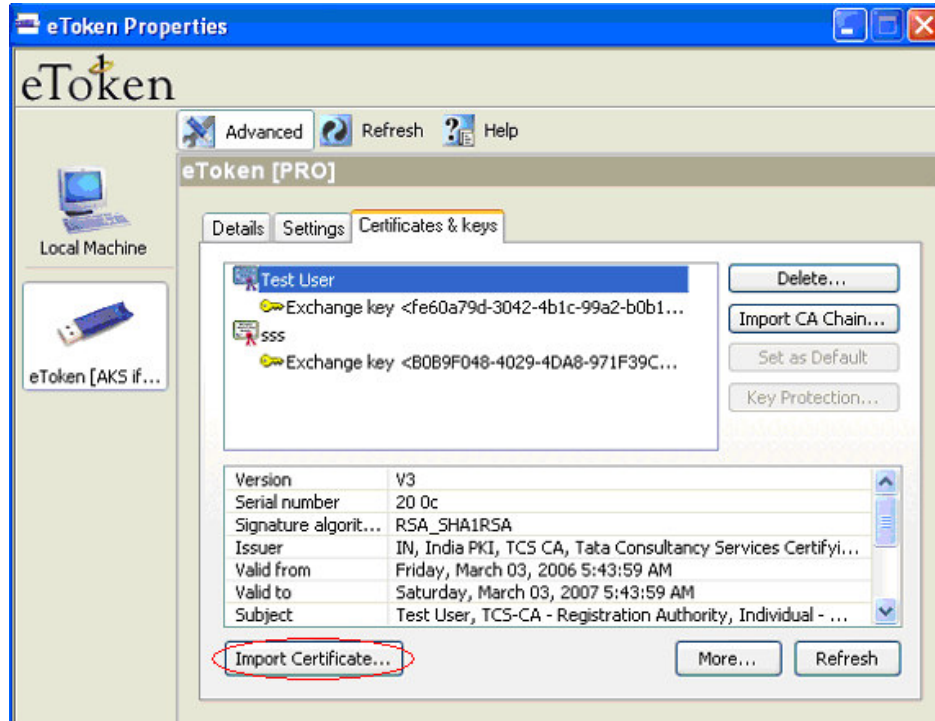


Click "OK" and in the eToken Properties window the new eToken name is displayed



Importing the Certificate:

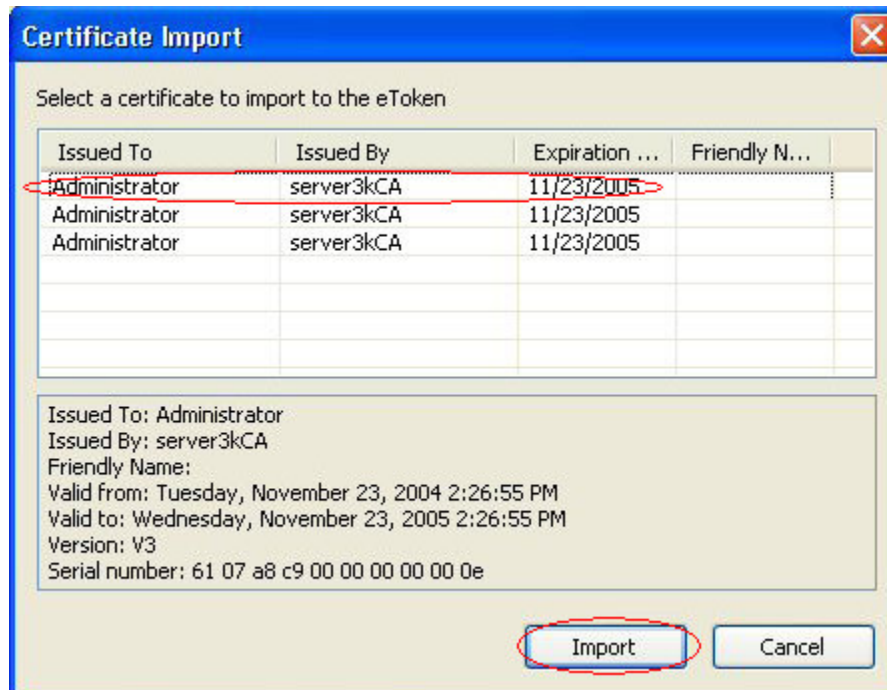
Click "Import Certificate" to import your certificate from "Personal Certificate Store" or ".pfx" file from a location on your computer.



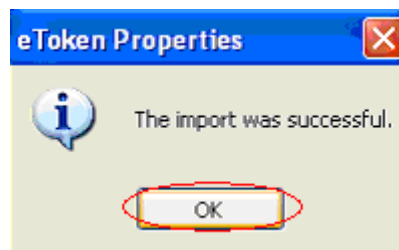
The following Dialogue box appears. Select whether to import the certificate from your personal certificate store on the computer or from a file location. If the certificate is present in the IE browser, select the option "Import certificate from my personal certificate store" else, if you have the certificate as a .pfx file at a location on your computer select "Import certificate from the file".



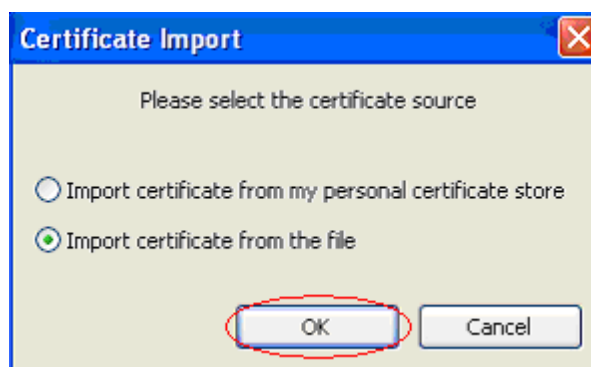
If you select the personal certificate store and click "OK", a list of available certificates from the personal certificate store are displayed. Select the certificate you wish to import into the eToken and click "Import".



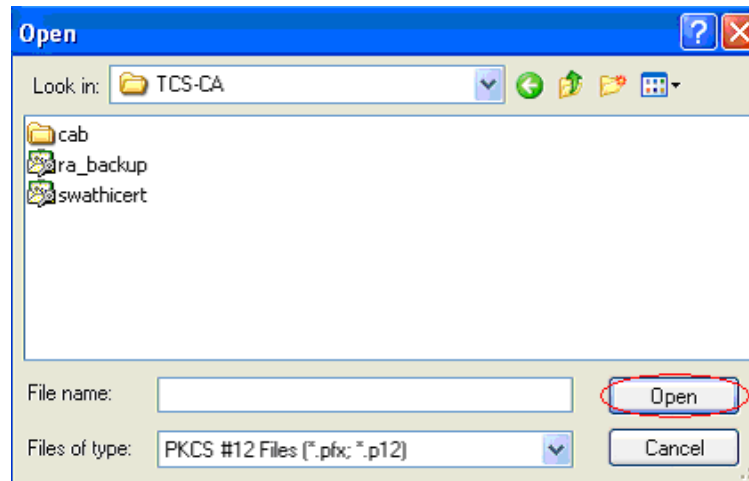
A confirmation message is displayed if the import is successful.



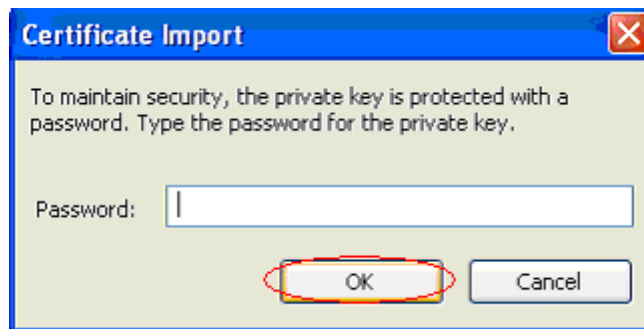
If the import is from a file which has already been exported to a particular location on your computer, Then select "Import certificate from the file" and click "OK".



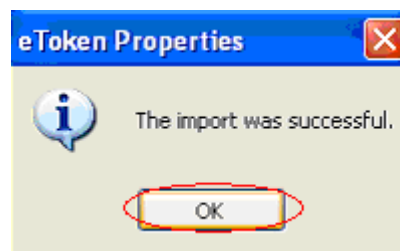
Select the path of the “.pfx” file and click “OK”.



A prompt for Password for the private key appears. Give the password that you had set to protect the file, while exporting the file and click “OK”



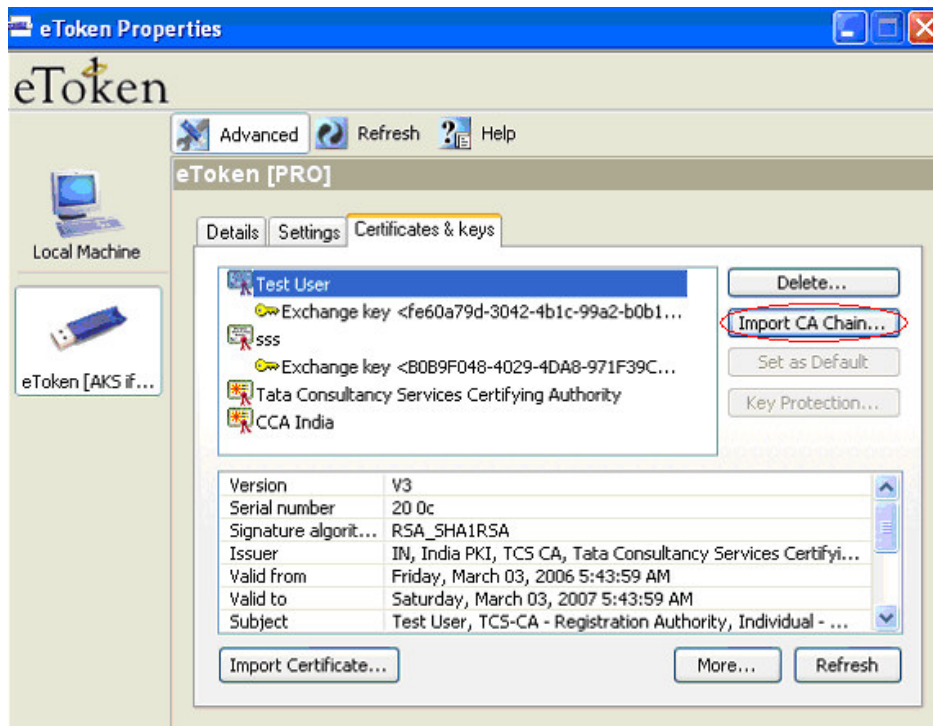
A confirmation message is displayed if the import is successful.



Importing the CA Chain

A certificate that is stored on the computer may be part of a hierarchical structure with more than one Certificate in the chain up to the Root CA. Importing a CA Chain takes the CA certificate and the complete CA Chain up to the root certificate that is stored on the computer and places it on the eToken.

When the "Import CA Chain" button is clicked, the CA Chain is imported onto the eToken and displayed in the certificate and key list window:



A message confirming the import was successful is displayed.

